

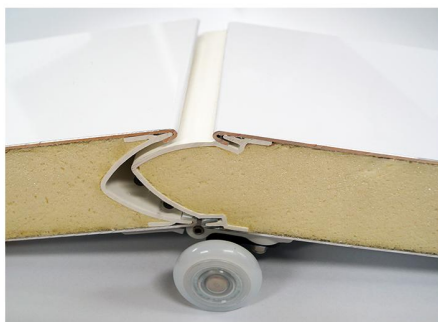


A U S T R A L I A

Whiting Insulated Fridge Door Model: K32



The K32 is lightweight and engineered to provide industry best thermal efficiency, sealing, durability and importantly, Fingershield Technology.



Technical Details

- High gloss white colour inner and outer 2mm folded aluminum panels
- 60mm overall thickness
- Polyurethane (CFC free) foam insulation
- Optimal safety with fingershield protection
- Hinges and roller holders manufactured of specially formulated high impact plastic to withstand low temperatures and corrosion
- 5-point compression sealing
- Stainless steel shaft rollers
- Large panel face, less panel veins
- Dual fridge and dust seal

Optional Extras

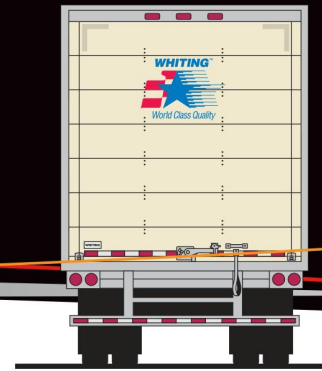
- Electric or pneumatic option with automatic opening and closing
- Choice of locks to suit your security requirements





A U S T R A L I A

Whiting Insulated Fridge Door Model: K32



Centre Hinge & End Hinge
with Roller Holder
(Zytel, Nylon)



Centre Hinge & End Hinge
with Roller Holder
(Stainless Steel)



Single Spring Balancer



Top Closure Arm
(Stainless Steel)



Nylon Roller -
Stainless Steel Shaft



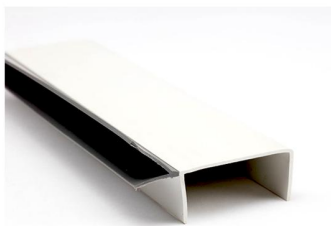
Zinc Plated Lifeguard Lock
with Interior Release



Zinc Plated Cable Anchor
Bracket



Grab Handle



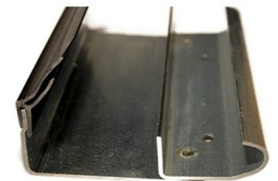
Top Seal Capping



Bottom Roller Holder
(Stainless Steel)



Triple Bottom Seal Carrier
& Bottom Seal



Mounting Angle, Side Seal
& Track Assembly

