



F3CL10
F3CL17
F3CL22
F3CL30

CANTILEVER TAIL-LIFT

LOAD CAPACITY: 1000, 1700, 2200, 3000 KG



DESCRIPTION

The 5 cylinders F3CL 10/17/22/30 are very strong lifts, with very high performances for intensive usage.

It is ideal for the most demanding applications in the regular transport business, such as supermarket and food distribution.

Platform Power opening that gives high speed of platform opening even with very low temperatures, smooth hydraulic automatic tilt, high stiffness ideal to equip vehicles for customers that like high performances.

The 5 cylinders F3CL 10/17/22/30 are extremely versatile lifts suitable for commercial vehicles up to heavy trucks, trailers and semi-trailers.

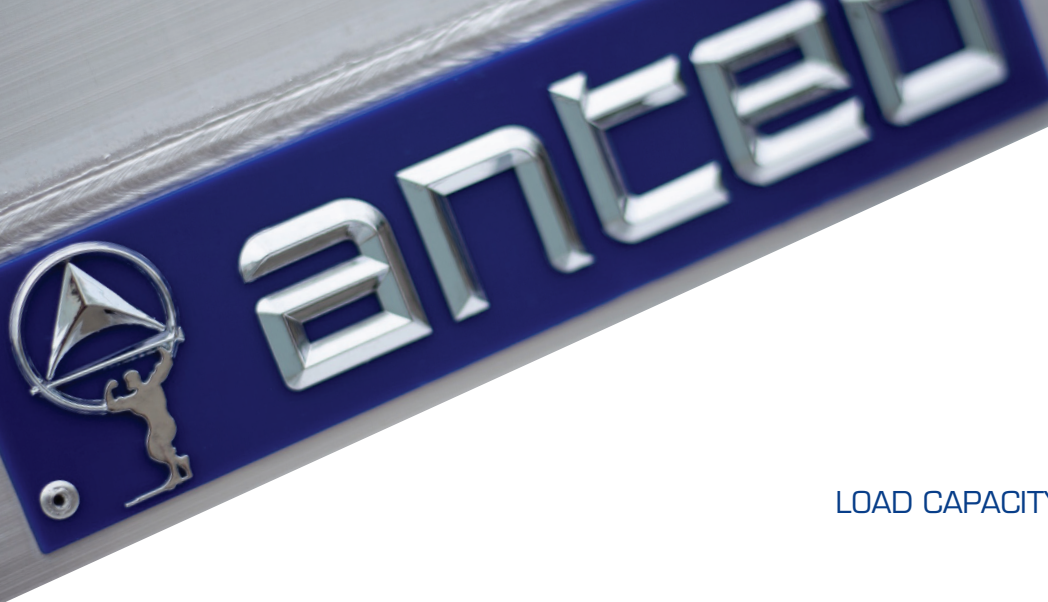
SPECIFICATIONS

Platform:	Aluminium
Platform depth:	from 1600 to 2600 mm rear bumper EEC type approved
Lift cylinders:	2
Tilt cylinders:	2
Autotilt at ground:	hydraulic (with memory feature)
Platform opening:	Powered opening
Power supply:	12 or 24 V
Low maint. bushes:	greasable
Frame color:	Black KTL plus and powder paint
Weight:	from 290 Kg

SUGGESTED OPTIONS

- Inside body remote control;
- Radio remote control;
- Foot operated controls on platform;
- Blinking lights on platform;
- Roll stop;
- Platform lock handle;
- Body seal kit;





F3CL10
F3CL17
F3CL22
F3CL30

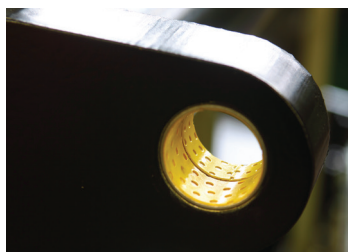
CANTILEVER TAIL-LIFT

LOAD CAPACITY: 1000, 1700, 2200, 3000 KG

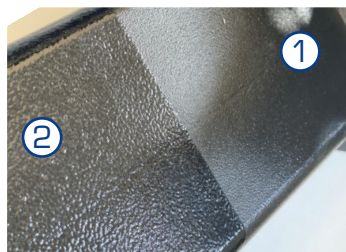
TECHNICAL DATA

Mod.	Load Capacity (600 mm load centre)	Weight* (Kg)	Floor to ground (max)	Floor to bottom of chassis		Mounting space (min)	Lift arm width (mm)			
				min	max		W105	W123	W125	W152
F3CL 10 C	1000	290	1115	300	500	705	1050	-	-	-
F3CL 10 H		305	1260	340	560	735	1050	-	-	-
F3CL 10 HS		320	1400	400	680	830	1050	-	-	-
F3CL 17 C	1700	405	1145	390	510	761	-	1230	-	-
F3CL 17 H		420	1285	455	580	757	-	1230	-	1523
F3CL17 HS		435	1430	460	680	891	-	1230	-	1523
F3CL 17 HL	1500	455	1520	545	770	1032	-	1230	-	-
F3CL 22 C	2200	415	1145	390	510	761	-	1230	-	-
F3CL 22 H		430	1285	455	580	757	-	1230	-	1523
F3CL22 HS		445	1430	460	680	891	-	1230	-	1523
F3CL 22 HL	2000	465	1520	545	770	1032	-	1230	-	-
F3CL 30 H	3000	655	1380	420	700	740	-	-	1250	-
F3CL 30 HS		670	1620	500	800	960	-	-	1250	-

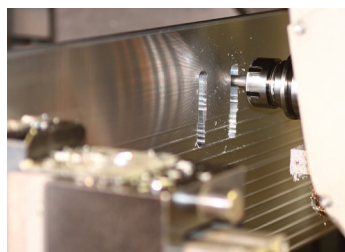
*Approximate weight for tail-lift equipped with aluminium platform dimensions 1600 x 2500 mm.
 The above mentioned weights are approximate and may vary according to production. Anteo reserves the right to change weights and technical specifications without prior notice. No indemnity for damages can be claimed from Anteo for changes in technical specifications and/or in weight.



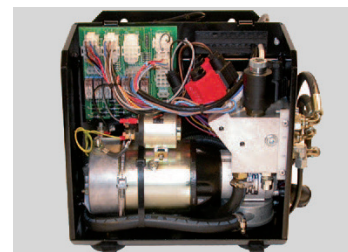
LOW MAINTENANCE BUSHES AND CHROMIUM PLATED PINS.



POWDER COATING PAINT (2) ADDED TO KTL PLUS (1). NO RUST AND NO SALT STAINS.



HI-TENSILE ALUMINUM SPECIALISTS SINCE 1992.



LOW NOISE POWER UNIT & NO ELECTRONICS = EASY MAINTENANCE